

LEGEND

- PRIME AGRICULTURAL AREA
- ARTERIAL COMMERCIAL
- BUSINESS PARK INDUSTRIAL
- ENVIRONMENTAL PROTECTION AREA
- ESTATE RESIDENTIAL
- GENERAL INDUSTRIAL
- HAMLET
- MINERAL RESOURCE
- OPEN SPACE
- REGIONAL COMMERCIAL
- RESIDENTIAL
- RURAL LANDS
- RURAL COMMERCIAL
- RURAL INDUSTRIAL
- SECONDARY PLAN AREA
- WASTE MANAGEMENT AREA

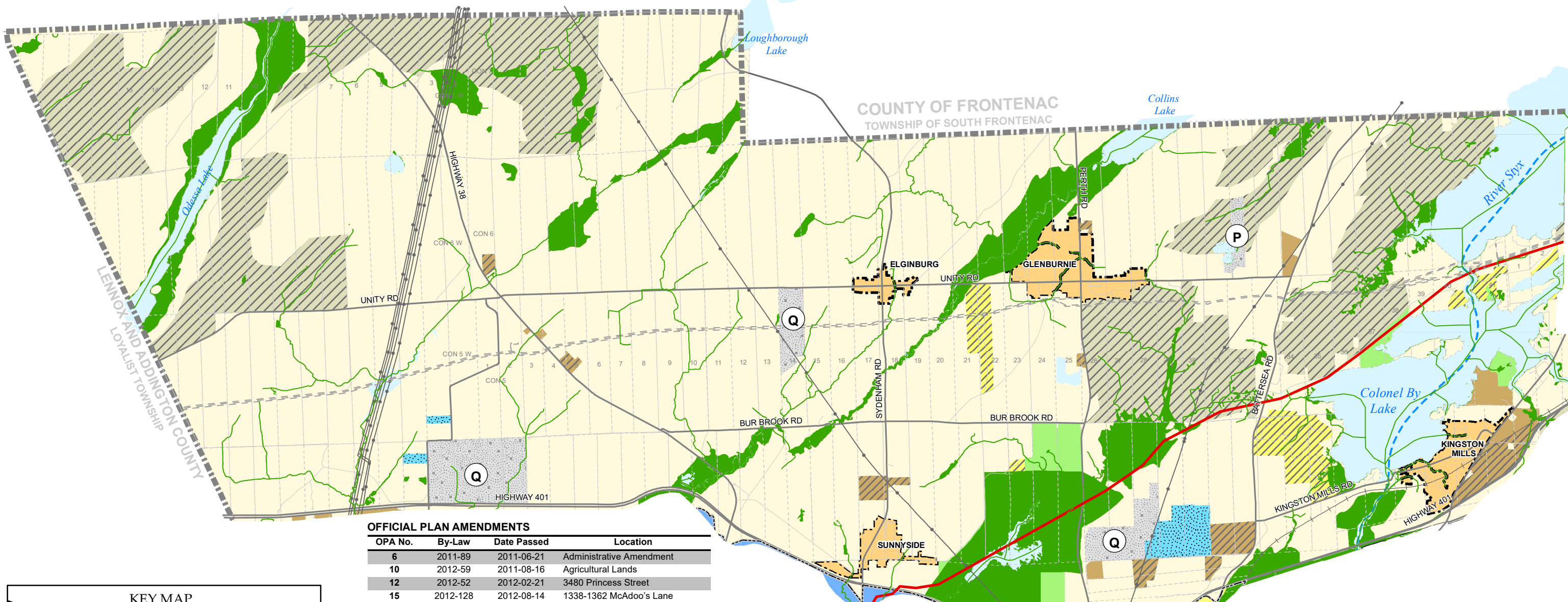
OTHER FEATURES

- MAJOR ROAD
- LOCAL ROAD
- RAILWAY
- URBAN BOUNDARY
- MAJOR HYDRO CORRIDOR
- TRANS-NORTHERN PIPELINE
- RIDEAU CANAL NAVIGATIONAL CHANNEL
- MUNICIPAL BOUNDARY
- LOTS
- WATERBODY

- PIT
- QUARRY
- WOLLASTONITE

NOTES

- 1) CERTAIN LAND USE DESIGNATIONS INCLUDED IN THE LEGEND MAY NOT APPEAR ON THE MAP.
- 2) COORDINATE SYSTEM UTM NAD83 ZONE 18.
- 3) 'P' DENOTES PIT, 'Q' DENOTES QUARRY, AND 'M-W' DENOTES MINE FOR WOLLASTONITE. SEE SECTION 3.16.4 OF THIS PLAN FOR POLICY CLARIFICATION REGARDING STATUS OF ENVIRONMENTAL PROTECTION AREAS.

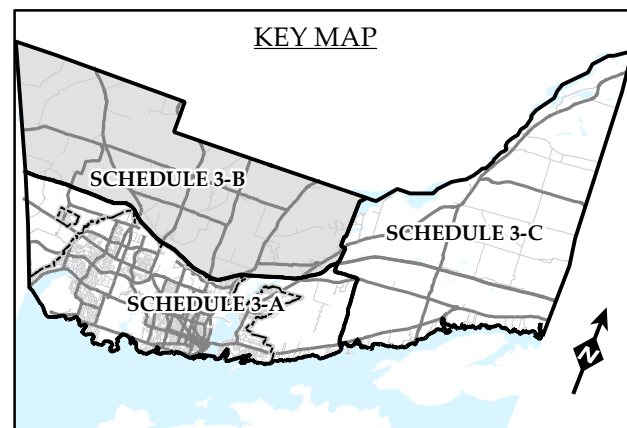


OFFICIAL PLAN AMENDMENTS

OPA No.	By-Law	Date Passed	Location
6	2011-89	2011-06-21	Administrative Amendment
10	2012-59	2011-08-16	Agricultural Lands
12	2012-52	2012-02-21	3480 Princess Street
15	2012-128	2012-08-14	1338-1362 McAdoo's Lane
16	2013-98	2013-04-23	Administrative Amendment
32	2014-190	2014-11-08	530 Maple Lawn Drive
38	2015-173	2015-10-06	2185 & 2215 Perth Road
42	2016-4	2015-12-15	530 Maple Lawn Drive
45	2016-20	2015-12-15	3175 Unity Road
49	2016-139	2016-06-23	1145 McAdoo's Lane
50	2017-57	2017-08-29*	OP Five Year Review
51	2016-201	2016-11-01	1572 Sunnyside Road
53	2017-18	2016-12-20	1397 Sydenham Road
54	2017-30	2017-01-10	1645 Sydenham Road
60	2018-59	2018-06-18	1201 McAdoo's Lane
67	2020-119	2020-09-15	2285 & 2311 Battersea Road
80	2021-193	2021-11-17	1533 McAdoo's Lane
82	2022-61	2022-04-26	New Zoning By-Law and Central Kingston Growth Strategy
84	2022-77	2022-05-17	1431 McAdoo's Lane

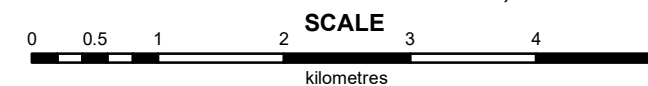
* Approved by Minister of Municipal Affairs August 8, 2017 and came into effect August 29, 2017

KEY MAP



**CITY OF KINGSTON
OFFICIAL PLAN
SCHEDULE 3-B
LAND USE**

Approved - August 29, 2017
Consolidated - December 1, 2022



1:60,000