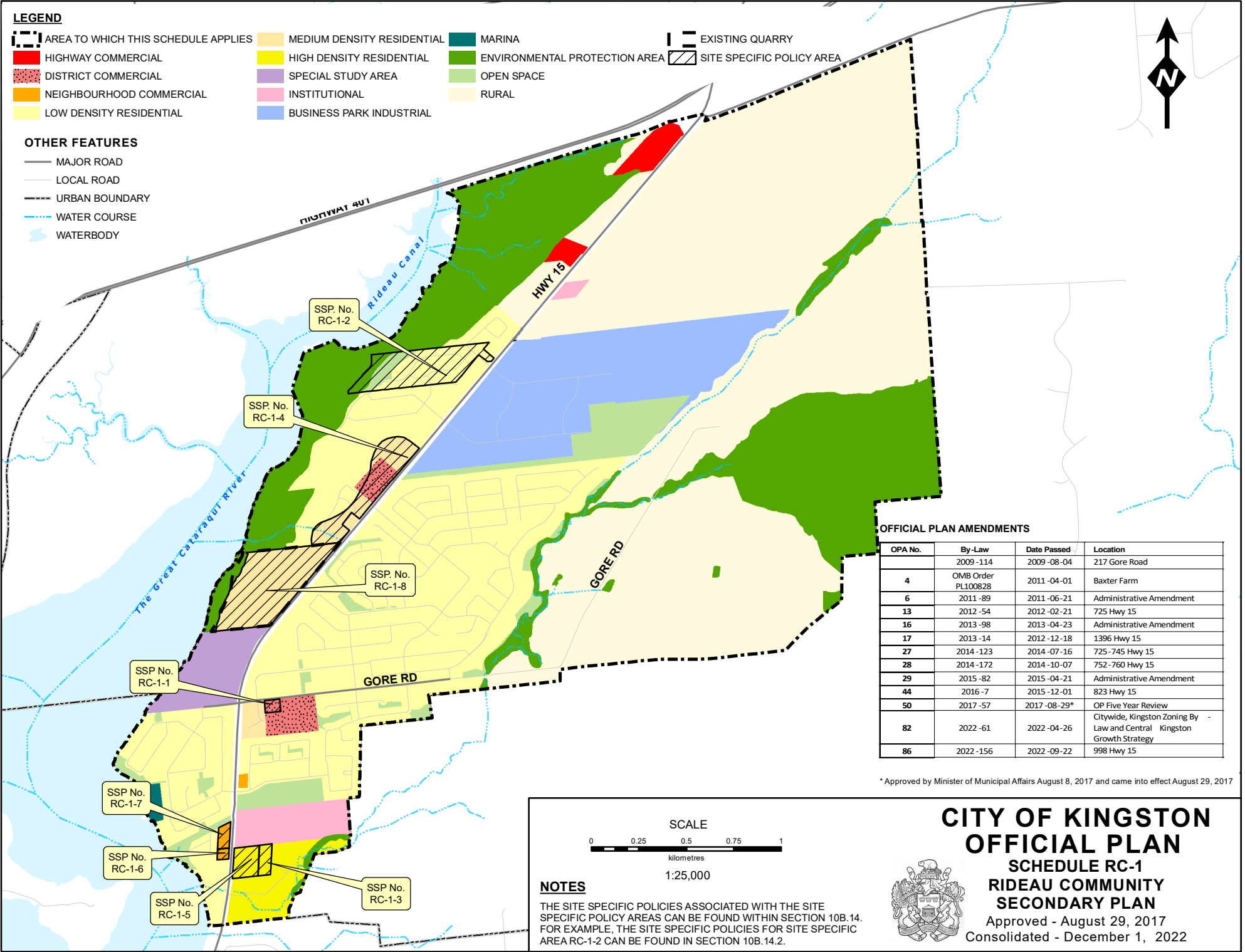


LEGEND

- | | | | |
|-------------------------------------|----------------------------|-------------------------------|---------------------------|
| AREA TO WHICH THIS SCHEDULE APPLIES | MEDIUM DENSITY RESIDENTIAL | MARINA | EXISTING QUARRY |
| HIGHWAY COMMERCIAL | HIGH DENSITY RESIDENTIAL | ENVIRONMENTAL PROTECTION AREA | SITE SPECIFIC POLICY AREA |
| DISTRICT COMMERCIAL | SPECIAL STUDY AREA | OPEN SPACE | |
| NEIGHBOURHOOD COMMERCIAL | INSTITUTIONAL | RURAL | |
| LOW DENSITY RESIDENTIAL | BUSINESS PARK INDUSTRIAL | | |

OTHER FEATURES

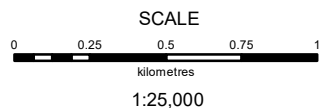
- MAJOR ROAD
- LOCAL ROAD
- URBAN BOUNDARY
- WATER COURSE
- WATERBODY



OFFICIAL PLAN AMENDMENTS

OPA No.	By-Law	Date Passed	Location
	2009 -114	2009 -08-04	217 Gore Road
4	OMB Order PL100828	2011 -04-01	Baxter Farm
6	2011 -89	2011 -06-21	Administrative Amendment
13	2012 -54	2012 -02-21	725 Hwy 15
16	2013 -98	2013 -04-23	Administrative Amendment
17	2013 -14	2012 -12-18	1396 Hwy 15
27	2014 -123	2014 -07-16	725-745 Hwy 15
28	2014 -172	2014 -10-07	752-760 Hwy 15
29	2015 -82	2015 -04-21	Administrative Amendment
44	2016 -7	2015 -12-01	823 Hwy 15
50	2017 -57	2017 -08-29*	OP Five Year Review
82	2022 -61	2022 -04-26	Citywide, Kingston Zoning By Law and Central Kingston Growth Strategy
86	2022 -156	2022 -09-22	998 Hwy 15

* Approved by Minister of Municipal Affairs August 8, 2017 and came into effect August 29, 2017



NOTES

THE SITE SPECIFIC POLICIES ASSOCIATED WITH THE SITE SPECIFIC POLICY AREAS CAN BE FOUND WITHIN SECTION 10B.14. FOR EXAMPLE, THE SITE SPECIFIC POLICIES FOR SITE SPECIFIC AREA RC-1-2 CAN BE FOUND IN SECTION 10B.14.2.



CITY OF KINGSTON
OFFICIAL PLAN
SCHEDULE RC-1
RIDEAU COMMUNITY
SECONDARY PLAN
 Approved - August 29, 2017
 Consolidated - December 1, 2022